



# MAIZE



## Weekly Market Report

BY: MR PIETER VAN WYK

DATE: 26 November 2018

Report #47

Next report: 3 December 2018

Latest prices

White - R2 284

Yellow - R2 289

per ton

### AMT's Market Expectations:

Signals of continued downward movement are triggered, especially with a fast strengthening ZAR. The trading ranges of late have been broken through to the downside, as well. Resistance is expected around R2400, while around R2200, is likely to be the real directional change.

### About the market...

Plantings in Mpumalanga mostly completed, but remains dry in some areas. Minimal plantings in the Eastern Free State. Planting in the area is likely to occur outside the optimal planting window. The Western parts of the country still very dry. Little summer plantings have been done to date. Limpopo is very dry, with almost no dryland plantings. There is still time till end-November for maize plantings. Approximately 50% of land under irrigation have been planted. Early maize in the Northern Cape has been planted. Expectation of a decrease in maize and soybean hectares planted, has been reported.

	EOW Nov. 23	W-on-W %	Previous Week	M-on-M %	Previous Month	Y-on-Y %	Previous Year
CBOT Maize	142.36	-1.58%	144.64	0.17%	142.12	4.75%	135.90
SAFEX WMAZ (spot)	2284	-4.67%	2396	-3.22%	2360	14.72%	1991
SAFEX WMAZ (Jul-19)	2420	-4.46%	2533	-4.08%	2523	0.88%	2399
SAFEX YMAZ (spot)	2289	-5.41%	2420	-3.54%	2373	9.05%	2099
SAFEX YMAZ (Jul-19)	2387	-4.18%	2491	-4.37%	2496	-0.62%	2402
Exchange rate	13.83	-1.71%	14.07	-4.95%	14.55	-0.72%	13.93
Brent Crude	59.08	-12.03%	67.16	-23.95%	77.69	-7.49%	63.86

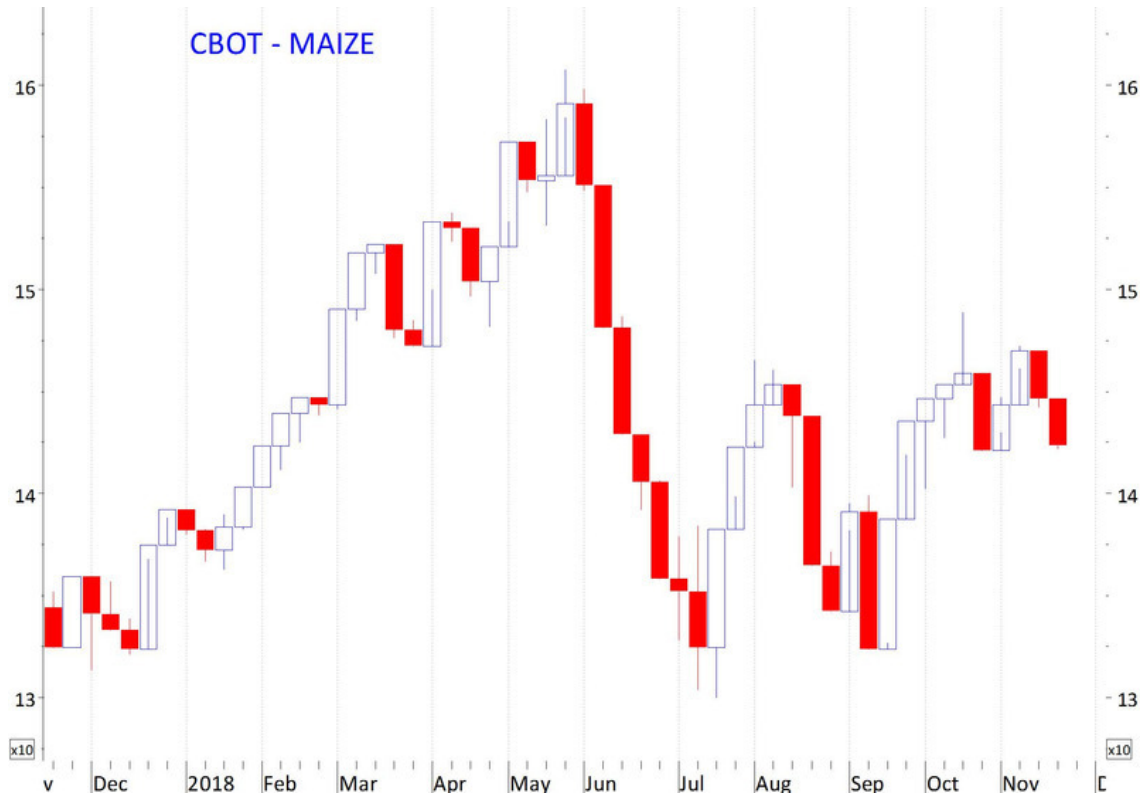
Disclaimer: Any forward-looking statements reflect AMT's current views with respect to future events and are not a guarantee of future performance or developments. You are strongly cautioned that reliance on any forward-looking statements involves known and unknown risks and uncertainties.

### GET IN TOUCH

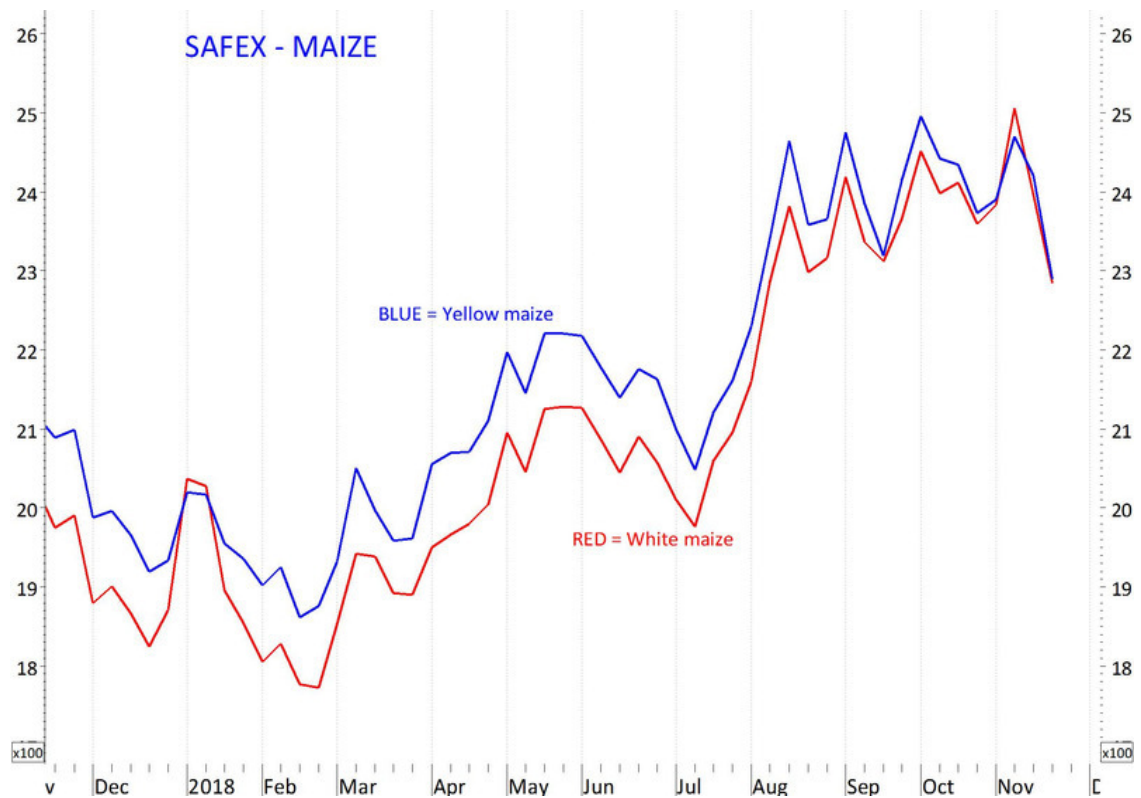
**Name** Dr Johnny van der Merwe  
**Phone** 018 285 2393  
**E-mail** johnny@amtrends.co.za  
**Website** www.amtrends.co.za



# International Price Trend



# Local Price Trend



**GET IN TOUCH**

**Name** Dr Johnny van der Merwe  
**Phone** 018 285 2393  
**E-mail** johnny@amtrends.co.za  
**Website** www.amtrends.co.za